



COMMUNITY PARTNER GUIDE

Sustainable City Year Program

Sustainable Cities Institute, University of Oregon



LET'S WORK TOGETHER!

The University of Oregon Sustainable Cities Institute (SCI) is seeking ideas from cities, counties, special districts, ports, tribes, and regional partnerships to partner with the Sustainable City Year Program (SCYP). If you have an idea for a special project or want to learn about our yearlong full partnerships, we want to hear from you.

Full partnerships will benefit from between 20,000 and 80,000 hours of work by University of Oregon students and faculty members, from a variety of

disciplines, working to advance the partner's priority projects. Prior partners include Albany, Gresham, Lane Transit District, La Pine, Medford, Redmond, Salem (2010-11 and 2023-24), Silverton, Springfield, TriMet, Troutdale, Hermiston, and Sisters. The partner must support the effort through staff time and the payment of a fee. The selection process is competitive. Priority is given to communities who express interest by March 1, 2025.



*what a year with SCYP can include

OVERVIEW OF PROGRAM

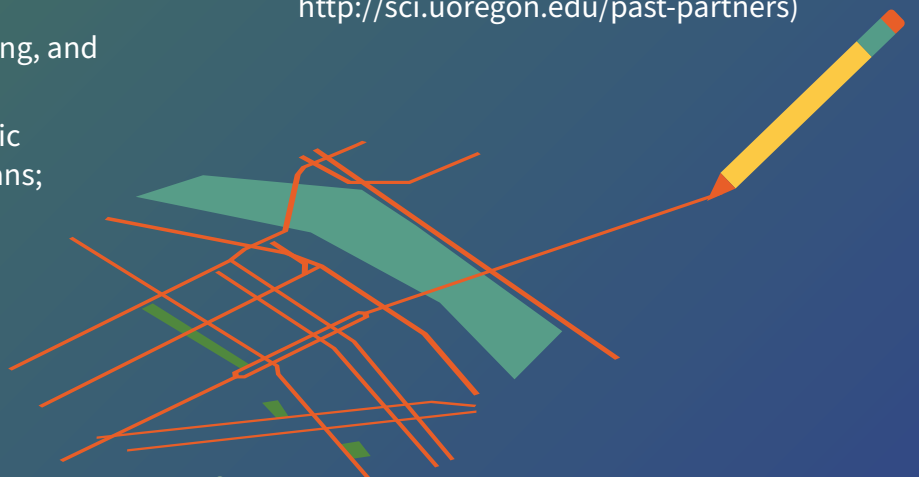
SCYP partnerships connect University of Oregon resources with Oregon communities to implement real change drawing directly from community-identified issues. Faculty and students work through a variety of studio projects and catalytic learning courses to provide students with real-world projects to investigate. Students bring energy, enthusiasm, and innovative approaches to difficult, persistent problems. SCYP's primary value derives from collaborations that result in on-the-ground impact and forward movement for a community ready to transition to a more sustainable and livable future.

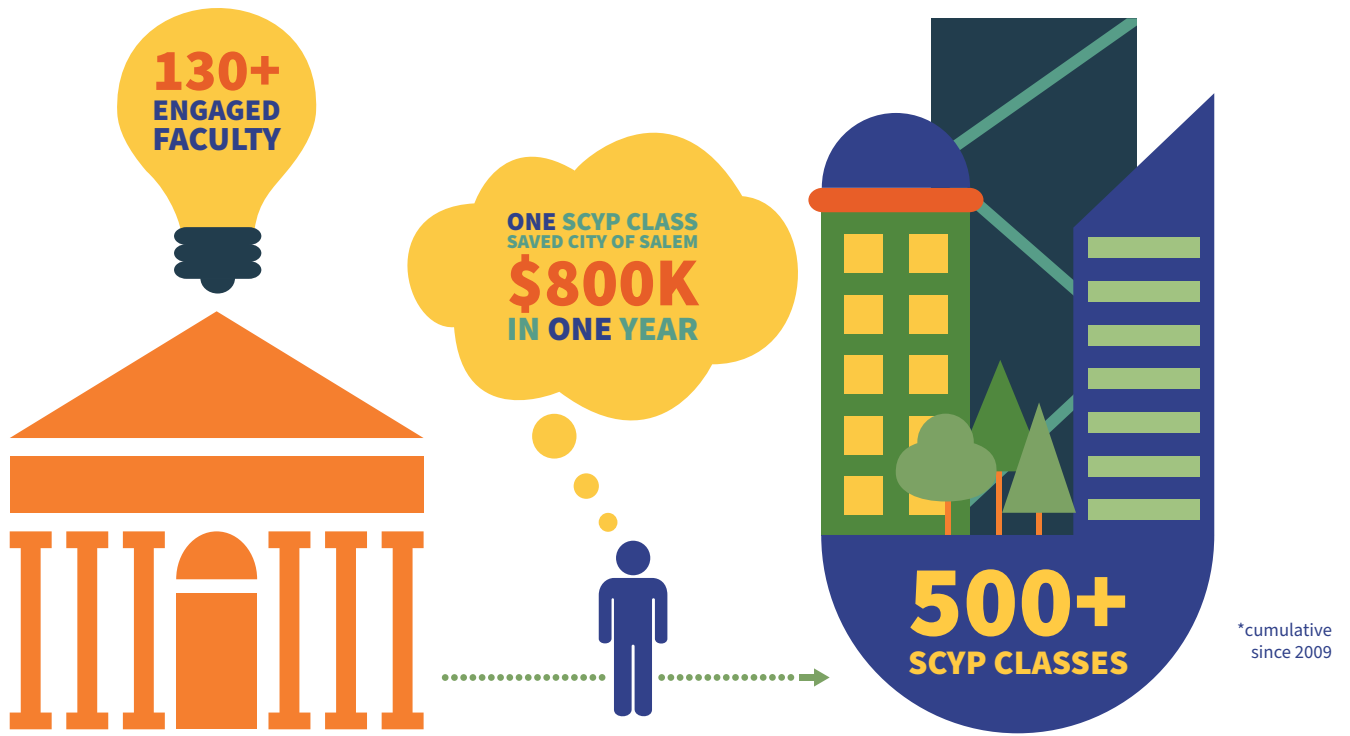
The question of sustainability applies not only to municipalities of all sizes, but also to a broad spectrum of disciplines. SCYP has included courses in architecture, arts administration, business administration, business management, digital arts, economics, environmental studies, geography, historic preservation, interior architecture, journalism, landscape architecture, law, nonprofit management, planning, product design, public administration, urban design, political science (Eastern Oregon University), and engineering (Portland State University). Additional disciplines may be added, depending on the partner's needs and faculty interest. Many SCYP projects combine multiple disciplines to address problems from diverse perspectives.

Past projects have aligned with an array of city council, stakeholder, and staff goals.

A subset of projects includes:

- Planning and design for schools, public safety facilities, city halls, civic centers, public libraries, fire stations, downtown buildings, and redeveloped brownfield sites;
- Assessments and recommendations for improving civic engagement with neighborhood groups, minority residents, volunteers of all ages, and the community at-large;
- Transportation safety, walkability analysis, bicycle planning, planning and design for new mobility, and recommendations for street-scale transportation improvements;
- Placemaking, improved wayfinding, and signage;
- Branding, marketing, and strategic communication and outreach plans;
- Review of local, state, and federal policies and their implications;
- Conceptual master plans, parks and open space design, and trail planning;
- Climate resiliency analysis and recommendations;
- Economic feasibility and market analysis studies;
- Special district and economic and business Improvement district feasibility studies;
- Development of important partner stories and highlights through photography and videography;
- And much more (for a complete project list, visit <http://sci.uoregon.edu/past-partners>)





BENEFITS OF THE SUSTAINABLE CITY YEAR PROGRAM

SCYP provides numerous benefits for the partner. The partner can expect:

- Concepts and designs that can energize staff and community members around projects tied to partner goals. Students can explore and innovate in directions that are sometimes unavailable to partner staff or consultants due to constrained project budgets or political conditions.
- A high rate of return on investment, with 20,000 – 80,000 hours of student work on projects.
- Increased energy and enthusiasm among community members and partner staff, and greater support for proposed solutions, through student outreach.
- Robust proposals that can spark community and staff discussions, increase the breadth of conversations around projects, as well as help to get “stuck” projects moving.
- Increased publicity in local, state, regional, and national publications (see examples on SCI’s website), and an improved reputation as a forward-thinking, sustainable organization. Project results can help inform and apply sustainability and livability principles.
- Ready-to-implement videos and communications campaigns.
- Increased momentum on priority projects.
- Framing of sustainability in a way that resonates with the community.
- Assistance with making connections across multiple layers of government, stakeholders, and community members to identify and address gaps and overlaps.
- An interdisciplinary group of faculty experts with first-hand knowledge of innovative research and practices, often nationally and internationally recognized in their fields.
- Interested students, with on-the-ground knowledge of your area, who may serve as candidates for future internships and staff positions. Students often turn out to be informal ambassadors for the partner, describing their successful collaborations with the partner in presentations, community meetings, future academic courses, and job interviews.

PARTNER SELECTION

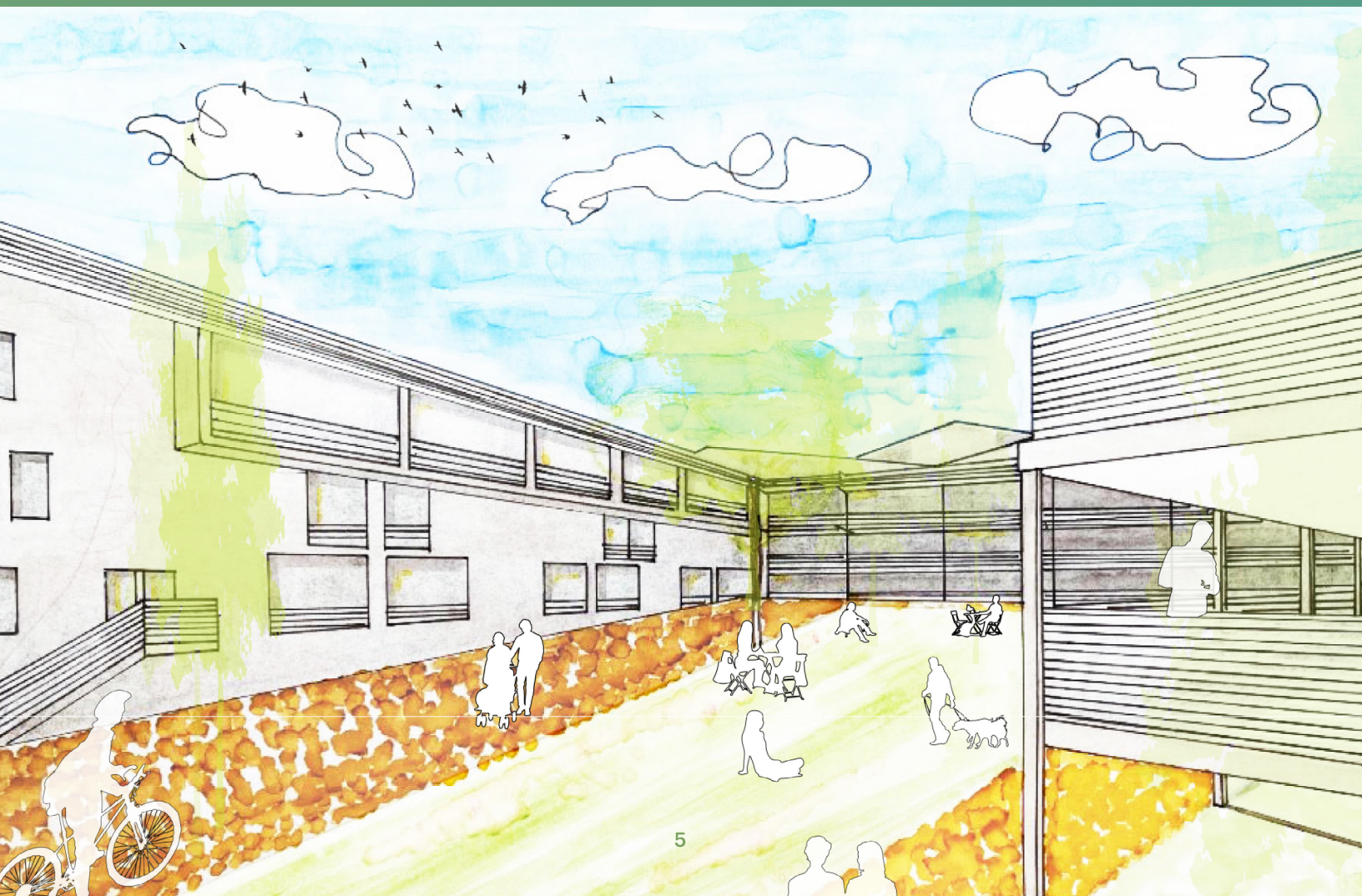
Communities interested in a full yearlong partnership with SCYP should have the staff and funding capacity to support 10-30 projects. To explore potential community projects, partners may want to develop and propose a list of 10-30 projects, since all projects may not be suitable for matching with university courses. Partners are encouraged to collaborate with other local entities (e.g. cities, counties, watershed councils, transit districts, school districts, nonprofit organizations, business or professional organizations, private funders, or research or educational institutions) to formulate projects and share costs. Smaller cities should develop no fewer than six projects.

IDENTIFYING PROJECTS

Partners are encouraged to contact the SCYP Director during preparation of their application to discuss their proposed projects. As with much of SCYP, successful development of a project list is a dialogue that includes:

1. The partner proposes a list of projects;
2. SCYP and the partner discuss how to match the projects' scope and scale with availability and interest of University of Oregon courses and faculty; and
3. SCYP suggests additional projects, based on the university's capacity, that could meet the partner's goals.

SCI will identify and tentatively match university faculty and courses with proposed projects as part of its review of each partner's application. Project timelines should not exceed nine months, and should ideally be compatible with the University of Oregon's three 11-week academic terms: fall (September-December), winter (January-March), and spring (April-June). The UO Law School operates on a semester schedule; fall runs from August to November, and spring is January to May.



LET'S WORK TOGETHER!

If you have an idea for a single project or want to learn about our yearlong full partnerships, we are want to hear from you. This is a rolling process with no deadline.

Fall: SCYP Director will be available for phone conferences and in-person meetings to discuss potential projects with partners. SCYP strongly suggests that partners interested in applying for SCYP schedule a phone call or visit with the SCYP Director.

Winter: Potential communities will be invited to submit a more robust application. SCYP staff will provide workshops for those communities to identify and develop prospective projects.

Spring: SCYP will identify and notify its preferred partner. SCYP and the partner will coordinate media to announce the selection of the SCYP partner. Partner visits UO to discuss proposed projects with faculty (typically in-person).

Summer: SCYP and the partner begin to match proposed projects with academic courses and faculty. SCYP and partner develop and sign contract.

SUSTAINABLE CITY YEAR PROGRAM TIMELINE

Summer: SCYP and partner develop memorandum of collaboration (scope of work) documents for each project and course. SCYP staff and faculty meet with partner staff and local professionals. Partner staff provides background information and documents for projects. Partner hosts open house (optional).

Fall: SCYP kick-off event at UO. Fall term classes work on SCYP projects.

Winter: Winter term classes work on SCYP projects. Fall term final reports delivered to the partner at end of term.

Spring: Spring term classes work on SCYP projects. Winter term final reports delivered to the partner at end of term.

May: SCYP wrap-up celebration at partner city.
Summer: Spring term final reports delivered to the partner at end of term.



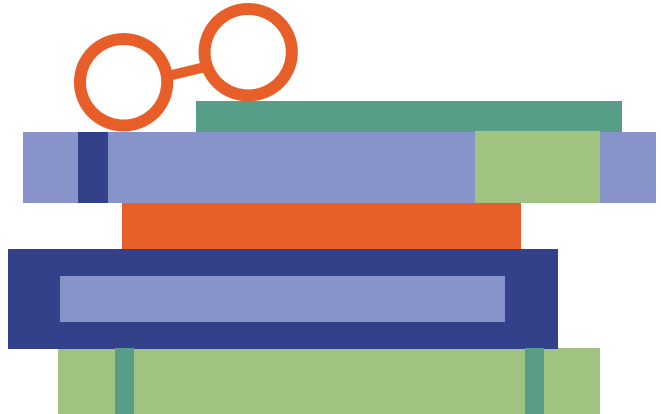
EXPECTED FINANCIAL SUPPORT AND STAFF RESOURCES

SCYP partnerships through the 2025-26 school year are made possible in part due to support from U.S. Senators Ron Wyden and Jeff Merkley, as well as former Congressman Peter DeFazio, who secured federal funding for SCYP through Congressionally Directed Spending. The partner is expected to contribute additional funding to the University of Oregon to support coordination of the program. The cost of SCYP will vary based on the number of projects, academic courses, and level of student activity in each course. In the past, partners have funded SCYP through a collaboration with other groups, including school and park districts, private developers, philanthropic foundations, business partners, and chambers of commerce.

Services covered by the fee include coordination support from SCYP staff; student and faculty site visits to the partner; compilation, printing, and distribution of high-quality final reports; publicity and hosting of events; student-created materials for display; coordination of contact with media; and electronic versions of coursework produced by students. SCYP works closely with UO Communications and UO Libraries to coordinate publicity and the network of resources available to students and the partner.

A key element of a successful SCYP program is staff involvement. The partner must have one or more staff champions for SCYP, preferably a manager or another person within the agency who has the ability to direct and motivate staff to participate in the partnership. SCYP projects will be successful only with staff participation. The partner will identify specific staff to serve as points of contact and to collaborate on each project with SCYP faculty and students. Before the start of the academic year, the partner will be requested to

compile and provide documents, such as prior concept plans, vision documents, architectural renderings, computer-aided drawings, GIS maps and layers, community datasets, and aerial photographs. SCYP will host links to relevant partner documents on its website. Example staff tasks during the term include presentation on the culture and context of the community, accompanying students on site visits, and participating in reviews and presentations of student work.



The partner must also identify a staff person who will be the primary program coordinator, serving as a liaison between the partner and SCYP. This coordinator should be involved enough in each project to know the staff and faculty involved and to understand the project's scope and current status. The project coordinator averages a few hours per week although time commitment may vary based upon the number of projects and the coordinator's level of involvement with each project.

Each project will include a memorandum of collaboration (scope of work), detailing the problem statement, potential directions for student exploration, expected outcomes, deliverables, and activities.

APPLICATION EVALUATION CRITERIA

SCI will evaluate SCYP applications based on the following criteria:

Top-Level Support: Agency lead and elected officials indicate willingness to direct staff to provide resources, devote time, and participate in SCYP courses.

Sustainability: It is desirable (but not essential) that projects include information around sustainability, which may include reducing greenhouse gas emissions, fostering active transportation, improving social equity, increasing housing density/mix, improving urban form, reducing energy use, or redeveloping existing structures or sites.

Financial Support: The partner's cost for SCYP will range from \$100,000 to \$350,000 to support 10 to 30 projects. While we do not ask for a formal commitment of funds at this time, it is preferable to include a statement in your application indicating expected sources of funding.

Real Impact: Projects directly relate to your goals and will have a measurable positive impact on the community. Describe how you will measure the success of SCYP projects and monitor progress after the year is over.

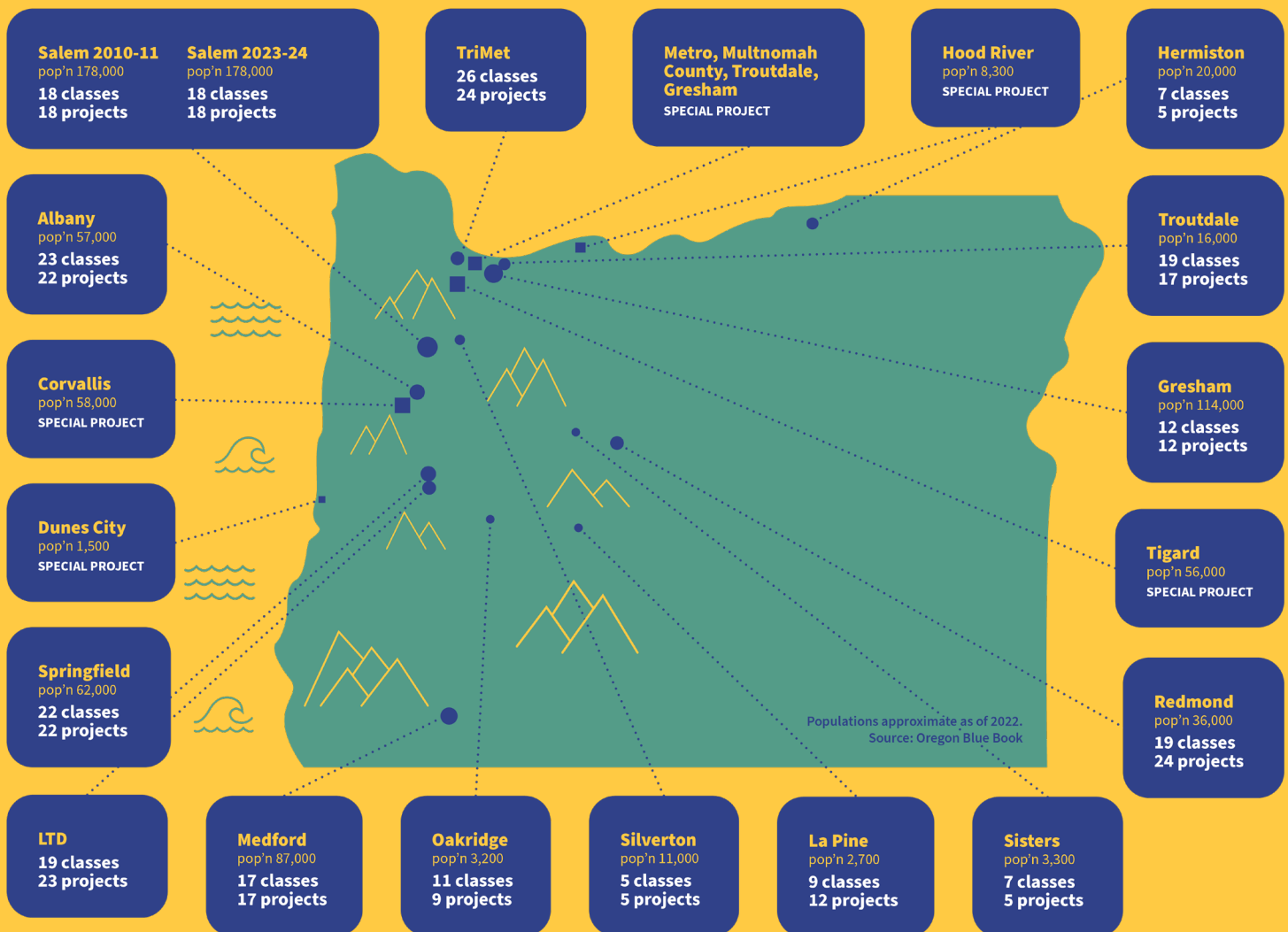
Academic Calendar and Logistics: Projects are compatible with UO academic calendar of three 11-week terms. Some projects may be complex enough to involve multiple courses over two or three terms. For partners more than two hours' travel time from Eugene, describe any special arrangements to address issues of collaboration and coordination, including access to technological resources.

Faculty Match: Projects must be within the capability of SCYP faculty and students. SCYP will identify faculty who are able and willing to carry out projects based on curricular and research needs and interests. Coordinating with SCYP as you develop your project list will help ensure a strong faculty match.

External Organization Support: Projects that involve other organizations, such as transportation districts, school districts, nonprofit organizations, business or professional organizations, or research or educational institutions, should indicate how these partnerships would function.



Who have we partnered with to date?





Additional Information

For additional information about SCI, SCYP, and this application process, please refer to SCI's website, at <https://sci.uoregon.edu/partnering-with-scyp>. Megan Banks is available to answer any questions about the program. Her contact information follows.

Past Partner Contact Information:

The Sustainable City Year Program coordinators from previous years have generously offered to answer questions about their experience with the Sustainable City Year Program.

Courtney Knox Busch

Chief Strategy Officer
City of Salem
cbusch@cityofsalem.net
503-540-2426

Jeb Doran

Senior Project Manager
TriMet
doranj@trimet.org
503-962-2141

Scott Woodford

Community Development Director
City of Sisters, (formerly of Redmond)
scott.woodford@ci.sisters.or.us

Chris Damgen

Development Manager
Port of Portland
chris.damgen@portofportland.com

Ed Hodney (retired)

Former Director of Parks and Recreation
City of Albany
541-917-7769

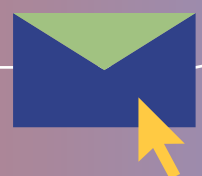
Cory Misley

City Manager
City of Silverton (formerly of LaPine and Sisters)
503-873-5321

SOUND INTERESTING?

**Let's connect and see if
a partnership might be
right for your community!**

Megan Banks
Sustainable City Year Program
mbanks@uoregon.edu
541-346-6395



SCYP PROJECT SUMMARY TEMPLATE

Please use this template as a guide to gather information that will be utilized to develop detailed project summaries for potential class matches. The righthand “Comments” column is for your use to document questions, follow-up, etc.

Project Description (paragraph):

Comments:

Deliverables/Desired Outcomes:

Initiating Department (can be Multiple Departments):

Potential Project Lead (Staff Name and Department):

Empty text box for Potential Project Lead (Staff Name and Department).

Comments:

Empty text box for Comments.

Potential Funding Source (can be Multiple Sources):

Empty text box for Potential Funding Source (can be Multiple Sources).

Empty text box for Comments.

Relevant Agency, City and/or Community Partners:

Empty text box for Relevant Agency, City and/or Community Partners.

Empty text box for Comments.

Related Council or Agency Goals:

Empty text box for Related Council or Agency Goals.

Empty text box for Comments.